

PRESE DI CONNESSIONE



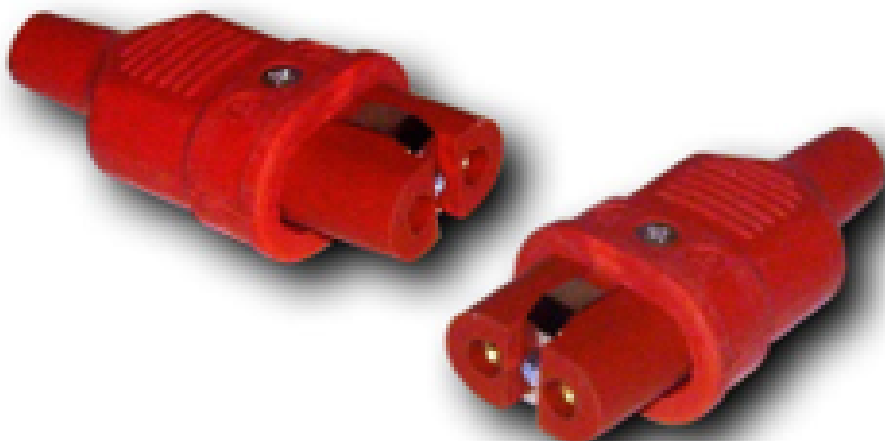
A/727

PRESA DRITTA IN
METALLO/SILICONE



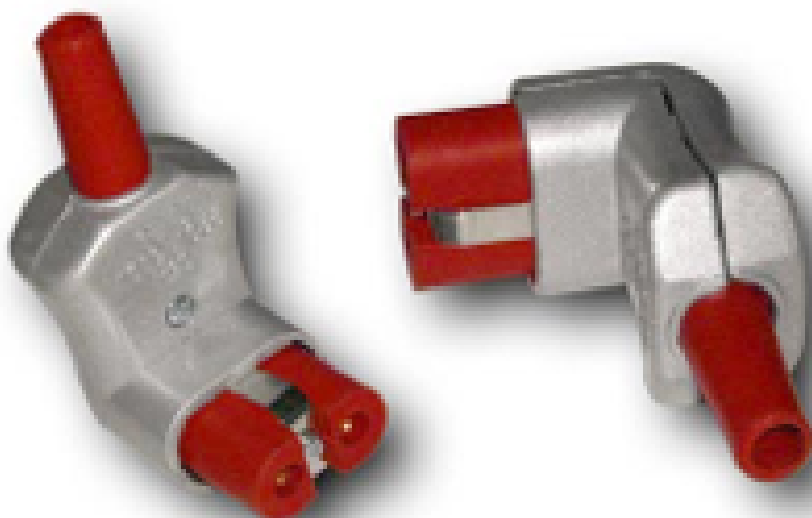
A/727-CER

PRESA DRITTA IN
METALLO/CERAMICA



A/727-SIL

PRESA DRITTA IN
SILICONE/SILICONE



A/728

PRESA A PIPA IN
METALLO/SILICONE



A/728-CER

PRESA A PIPA IN
METALLO/CERAMICA



A/729

PRESA A SQUADRA IN
METALLO/SILICONE



A/729-CER

PRESA A SQUADRA IN
METALLO/CERAMICA



A/C13
PRESA TRIPOLARE TEDESCA
IN SILICONE