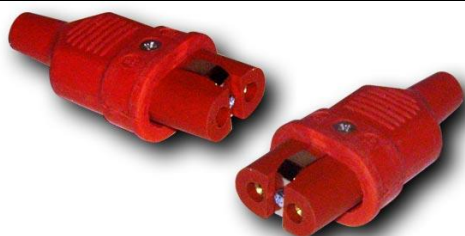


PRESE VOLANTI PER IL COLLEGAMENTO DI RESISTENZE ELETTRICHE

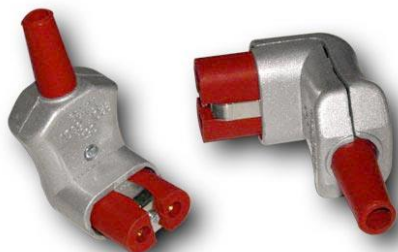
A/727
PRESA DRITTA IN
METALLO/SILICONE



A/727-CER
PRESA DRITTA IN
METALLO/CERAMICA



A/727-SIL
PRESA DRITTA IN
SILICONE/SILICONE



A/728
PRESA A PIPA IN
METALLO/SILICONE



A/728-CER
PRESA A PIPA IN
METALLO/CERAMICA



A/729
PRESA A SQUADRA IN
METALLO/SILICONE



A/729-CER
PRESA A SQUADRA IN
METALLO/CERAMICA



A/C13
PRESA TRIPOLARE TEDESCA IN
SILICONE